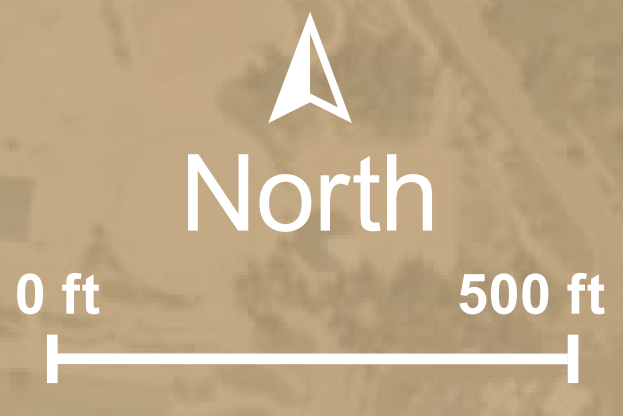
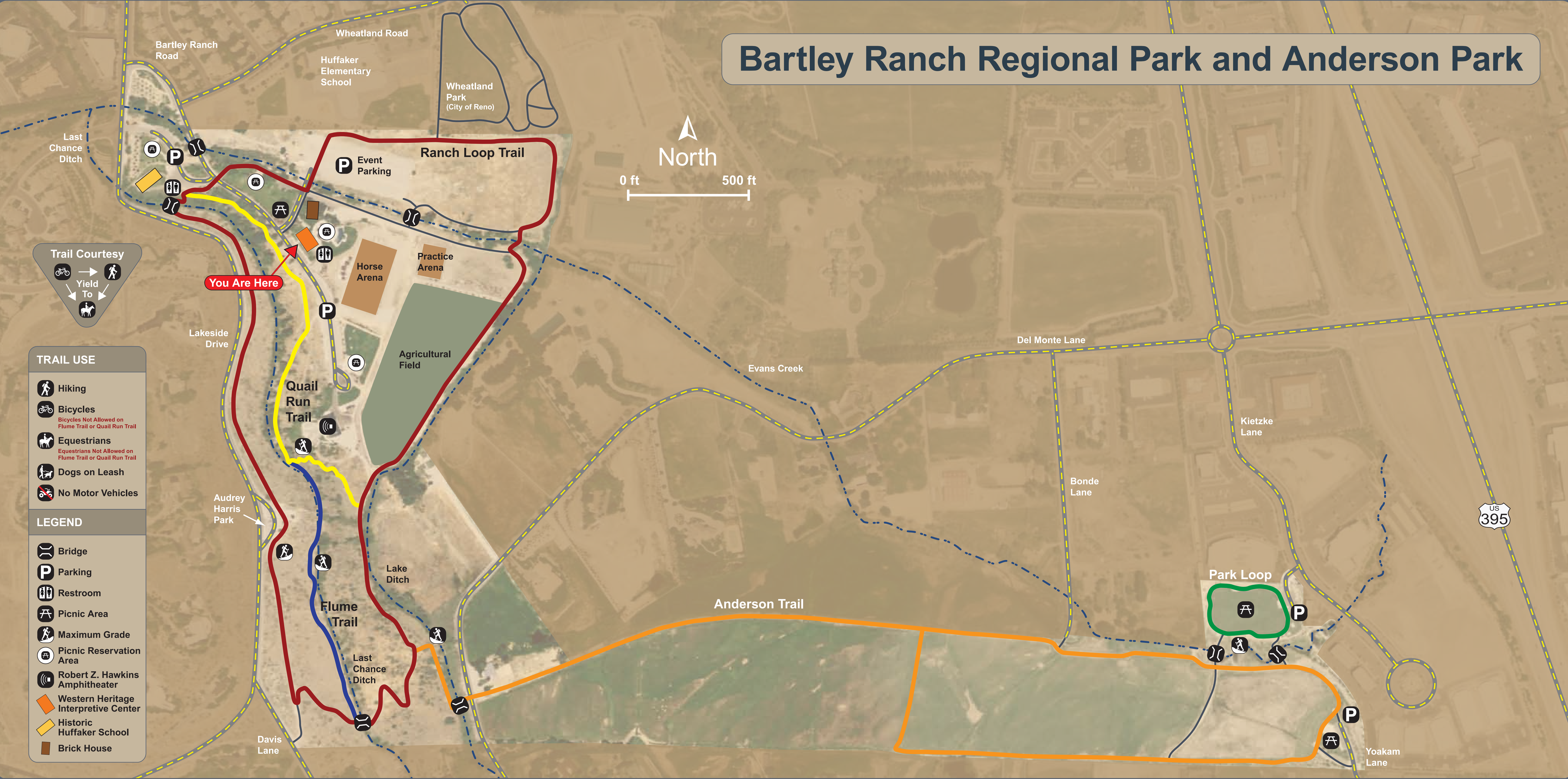


# Bartley Ranch Regional Park and Anderson Park



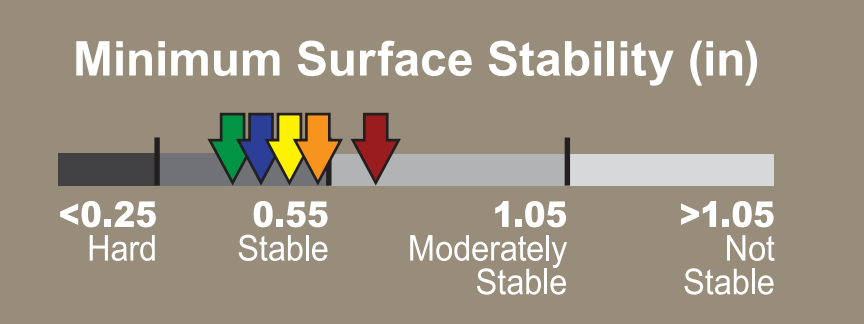
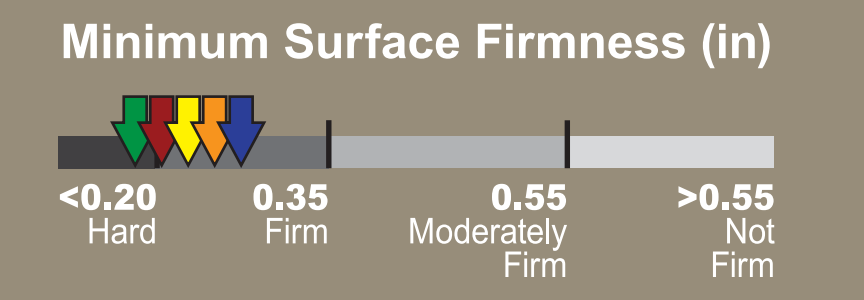
- TRAIL USE**
- Hiking
  - Bicycles  
Bicycles Not Allowed on Flume Trail or Quail Run Trail
  - Equestrians  
Equestrians Not Allowed on Flume Trail or Quail Run Trail
  - Dogs on Leash
  - No Motor Vehicles

- LEGEND**
- Bridge
  - Parking
  - Restroom
  - Picnic Area
  - Maximum Grade
  - Picnic Reservation Area
  - Robert Z. Hawkins Amphitheater
  - Western Heritage Interpretive Center
  - Historic Huffaker School
  - Brick House



## A Trail Access Information

Trail Name	Length	Typical Grade	Maximum Grade <small>Standard Ramp is 8.3%</small>	Typical Cross Slope	Maximum Cross Slope	Typical Trail Width	Minimum Clearance Width	Surface Type	Surface Firmness		Surface Stability	
									Typical	Worst	Typical	Worst
Ranch Loop Trail	1.5 mi	4.5%	371 ft is 16% – 25%	2.8%	18 ft is 16% – 20%	90 in	40 in	Aggregate/Gravel	0.19	0.22	0.36	0.60
Quail Run Trail	0.4 mi	7.3%	186 ft is 20% – 40%	3.5%	46 ft is 18% – 30%	60 in	25 in	Aggregate/Gravel	0.19	0.22	0.39	0.50
Flume Trail	0.2 mi	4.6%	37 ft is 14% – 19%	3.9%	47 ft is 12% – 14%	48 in	20 in	Soil	0.23	0.25	0.38	0.49
Anderson Trail (Round Trip)	1.7 mi	2.5%	196 ft is 14% – 21%	2.4%	311 ft is 7% – 11%	76 in	48 in	Aggregate/Gravel	0.19	0.22	0.39	0.52
Park Loop	0.2 mi	1.6%	64 ft is 4% – 5%	1.8%	230 ft is 3% – 4%	84 in	84 in	Aggregate/Gravel	0.18	0.19	0.37	0.43



Funded by the Nevada Recreational Trails Program

**WARNING:** Trail conditions may have changed since September 2009 when these trails were assessed. Secondary trails are shown in dark gray. Signage created by Beneficial Designs Inc. using data collected by a certified trail assessment coordinator.